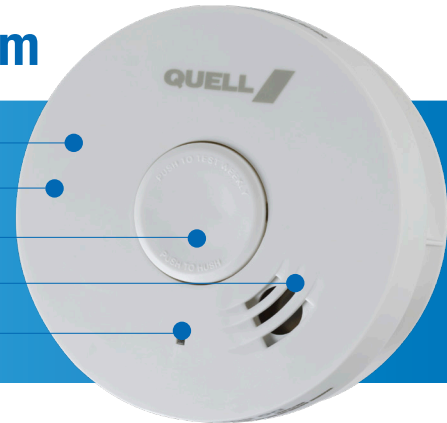


# CARAVAN & MOTOR HOMES

## Sealed Lithium Photoelectric Smoke Alarm



- Non removable lithium battery
- Photoelectric sensor
- Test/hush button
- Bug screen
- End-of-life warning



### Built tough

The Quell caravan and motor home alarm is built tough and vibration tested, designed specifically for campervans, caravans, onsite vans, park vans and annexes.

### Protect your family when travelling

Changes to the Environmental Planning and Assessment Regulation have introduced the requirement for smoke alarms be installed in areas where people sleep for all existing and new caravans, campervans, motorhomes, park vans and associated structures.

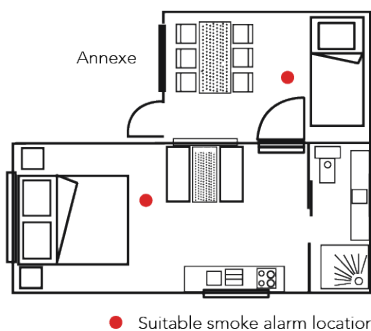
The Quell QC1500 Photoelectric smoke alarm has been designed to face the rigors you would typically expect in mobile dwellings such as heightened vibration, extremes in temperature and the potential of nuisance alarms from dust, bugs and cooking.

Fires develop in many ways and are often unpredictable. Photoelectric smoke alarms can provide early warning of a fire giving time for occupants to escape.

### Suitable alarm locations

You must have at least one working smoke alarm in all areas where occupants sleep.

Quell also recommends the installation of a dry chemical powder fire extinguisher, carbon monoxide alarm and fire blanket along with ensuring you have a fire escape plan to ensure caravan owners are adequately prepared in the event of an emergency.



● Suitable smoke alarm location

Please refer to the user manual prior to installing any smoke alarm.

### Features and benefits

- **Vibration tested**  
Built tough to withstand the rigours of transport
- **Photoelectric sensor**  
Advanced sensor that reduces cooking related nuisance alarms.
- **Central Hush/Test button**  
Easy to operate. Tests the alarm circuitry and horn and silences nuisance alarms.
- **Bug screen**  
Prevents nuisance alarms caused by insect infiltration.
- **Sealed-in lithium battery**  
Maintenance and hassle free with prevention from tampering and removal. The alarm is always on, with no battery replacement required.
- **End-of-life notification**  
Alerts you after 10 years when it's time to replace the alarm.
- **Ramp-up horn**  
Allows sound emitted during test sequence to be reduced to a more acceptable volume for the user.
- **Australian Standards approved**  
Complies with Australian Standard AS 3786:2014 incl. Amdt 1 and Activfire listed for quality assurance.
- **12 month limited warranty**

# CARAVAN & MOTOR HOMES SEALED LITHIUM PHOTOELECTRIC SMOKE ALARM

## Product specifications

Product Code	137334
Model Number	QC1500
Power Source	Sealed, non-removable lithium-ion battery. No battery installation or replacement necessary for the life of the alarm
Smoke Sensor	Photoelectric
Audio Alarm	85+ dB at 3 metres
Size	104 mm (diameter) x 45 mm
Weight	0.30 kg
Interconnects	No
Temperature	Operating range: -10°C to 65°C
Humidity (non-condensing)	Operating range: maximum 93% relative humidity (RH)
Warranty	12 month limited warranty
Certification	Activfire® listed. Complies with Australian Standard AS 3786:2014 incl. Amdt 1

## Ordering information

Bar Code	Code	Pack Qty	Dimensions (D x W x H)	Weight	Pallet Qty
9315546373343	137334	Each	90 mm x 190 mm x 245 mm	0.33kg	384
29315546373347	137334	Inner box 6	460 mm x 165 mm x 208 mm	1.13kg	384
69315546373345	137334	Outer carton 48	683 mm x 429 mm x 482 mm	10.22kg	384

## Contact

For further information on Quell® smoke alarms, or other products in the Quell® range visit our website at [www.quell.com.au](http://www.quell.com.au) or phone **1800 654 435**



**Distributed by:**